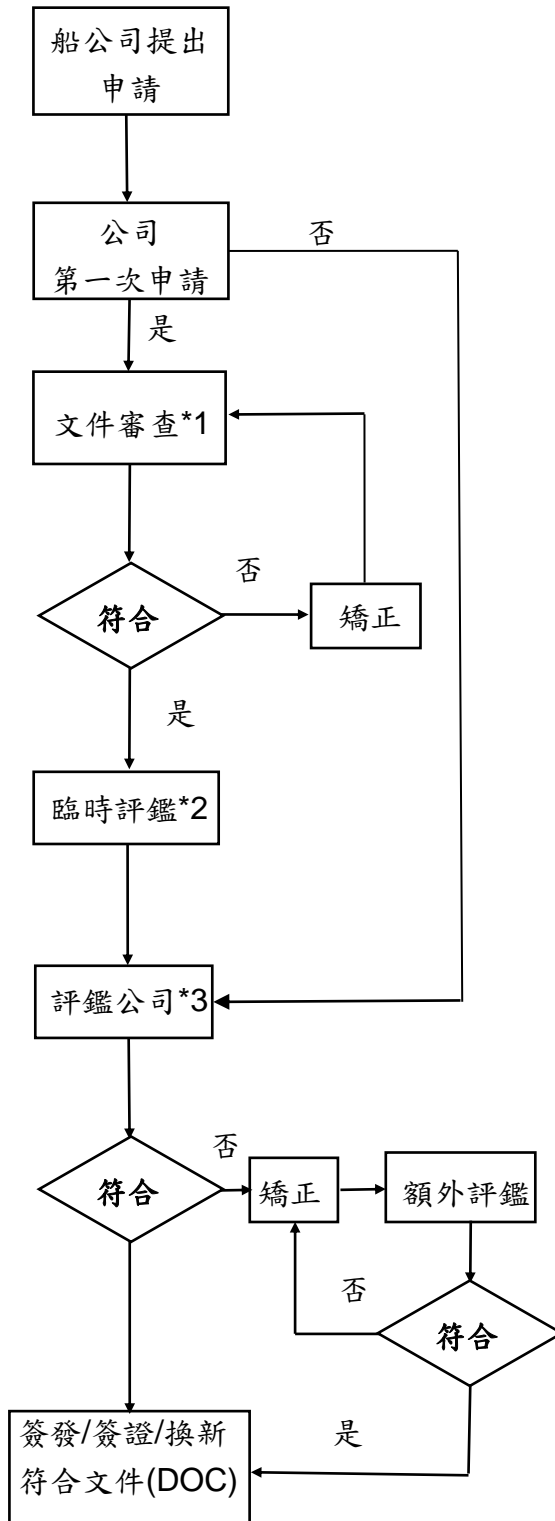


# 安全管理系統驗證程序-依據國際安全管理章程

## 驗證程序流程圖

### A. 公司符合文件 (DOC) :



#### \*1: 文件審查

- 1.送審文件須以電子檔及紙本並陳。
- 2.送審文件應含手冊、程序書、工作指導書及表格。
3. 審核時間約收到文件後 2-3 週。若送審文件須修正，則審核時間將會延長。

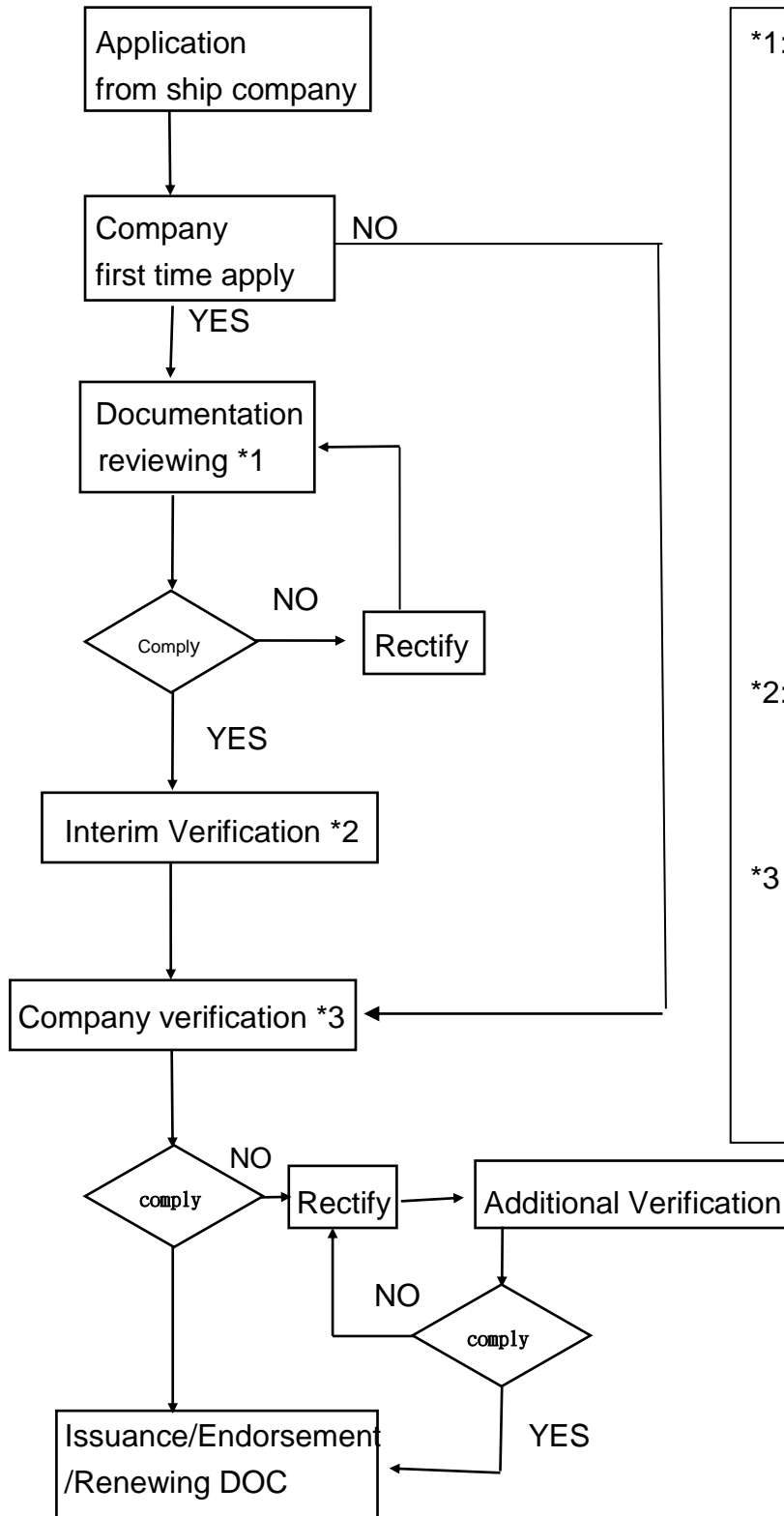
\*2: 臨時評鑑於文件審查完畢即可執行

\*3: 初次評鑑將於臨時評鑑後 3~5 個月，累積足夠客觀證據即可執行。

# SMS CERTIFICATION PROCEDURE 《SCP》 -According to ISM Code

## CERTIFICATION PROCEDURE FLOW CHART

### A. DOCUMENT OF COMPLIANCE (DOC) :



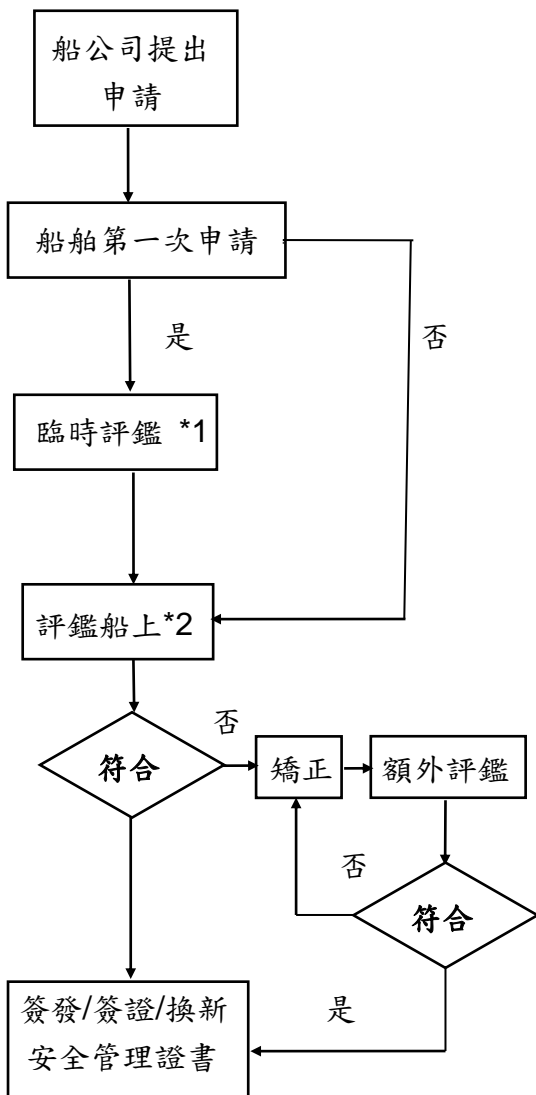
\*1: Documentation Reviewing

1. Documentation should be submitted in both electronic and hard copy.
2. Documentation should include the manual, procedures, work instructions and forms.
3. Reviewing period will be 2~3 weeks after documentation is received. If the document must be modified, the reviewing period will be extended.

\*2: The interim verification can be conducted after documentation reviewing is completed.

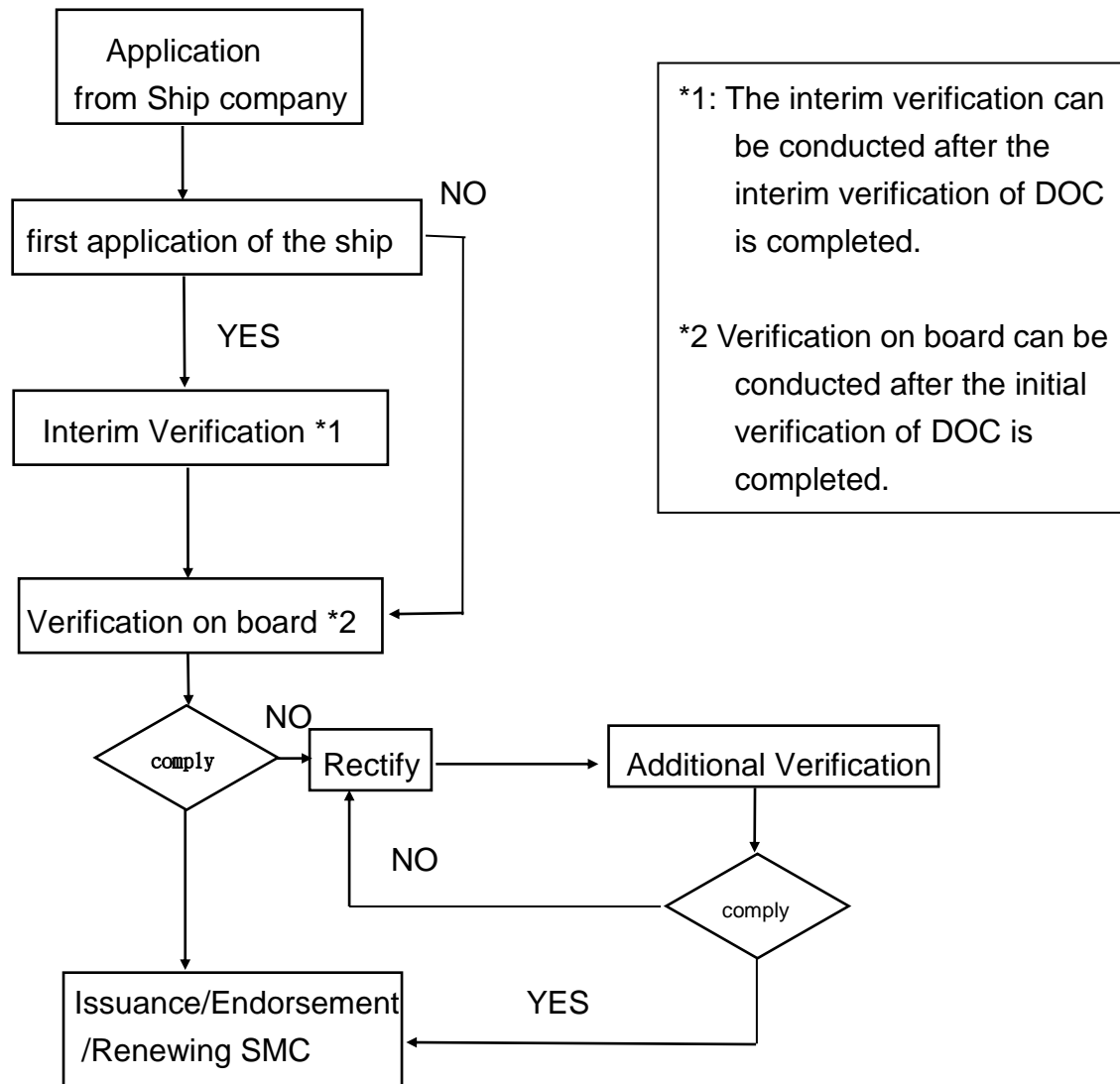
\*3 The initial verification can be conducted in 3~5 months after the interim verification is completed and enough objective evidence is accumulated.

**B. 船舶安全管理證書 (SMC) :**



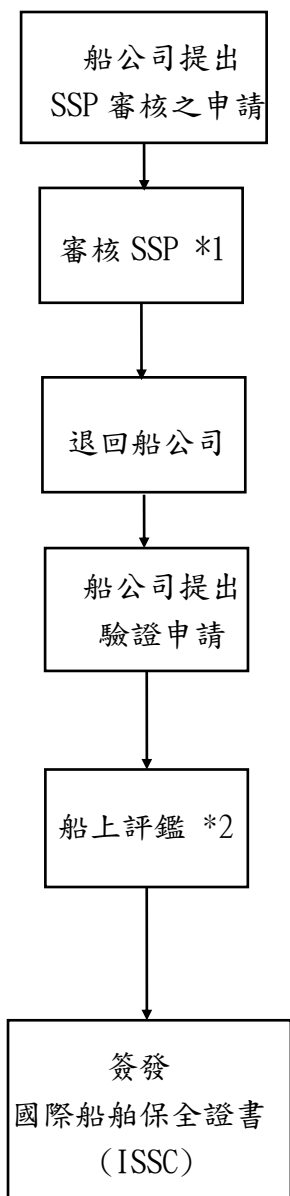
\*1: 公司 DOC 臨時評鑑後即可執行  
\*2: 公司 DOC 初次評鑑後即可執行。

## B. CERTIFICATION OF SHIP SAFETY MANAGEMENT (SMC) :



# 國際船舶保全系統驗證程序-依據國際船舶和港口保全章程

## 驗證程序流程圖



### \*1: SSP 審核

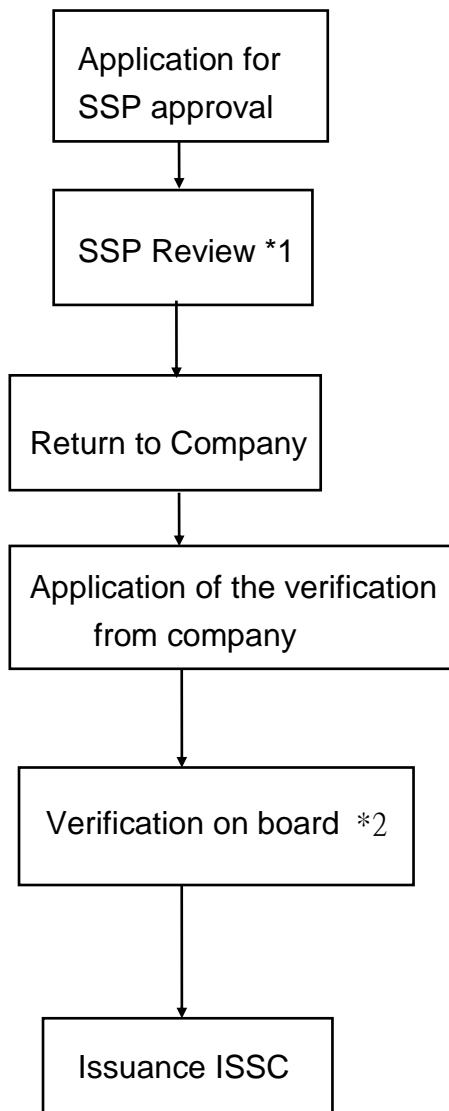
1. SSP(含 SSA)須以電子檔及紙本並陳。
2. 送審文件應含國籍證書影本、公司 DOC 證書影本、CSO & SSO 證書影本。
3. 審核時間約收到文件後 2~3 週。若送審文件須修正，則審核時間將會延長。

### \*2:

1. 船上臨時評鑑於 SSP 審核完成即可執行。
2. 船上初次評鑑於臨時評鑑後 3~5 個月，船上累積足夠客觀證據即可執行。

# ISPS CERTIFICATION PROCEDURE《ISPS-CP》-According to ISPS Code

## CERTIFICATION PROCEDURE FLOW CHART



### \*1: SSP Approval

1. SSP (including SSA) should be submitted in both electronic and hard copy.
2. Documentation should include copy of Certificate of vessel's nationality, DOC Certificate, as well as CSO & SSO Certificate.
3. Reviewing period will be 2~3 weeks after documentation is received. If the document must be modified, the reviewing period will be extended.

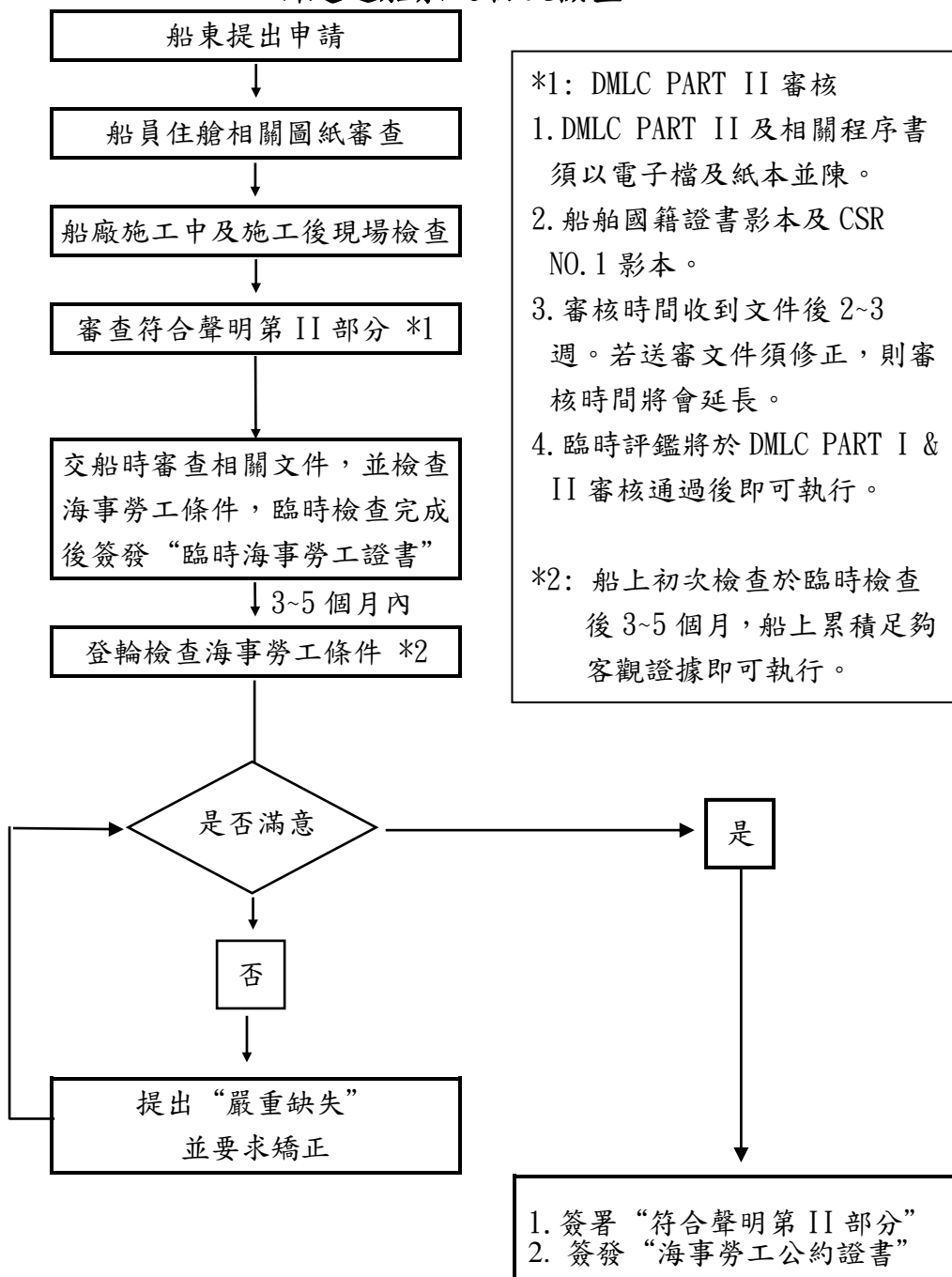
### \*2:

1. The interim verification on board can be conducted after SSP Approval is completed.
2. The initial verification on board can be conducted in 3~5 months after the interim verification is completed and enough objective evidence is accumulated.

海事勞工公約驗證作業規定

MLCP-1

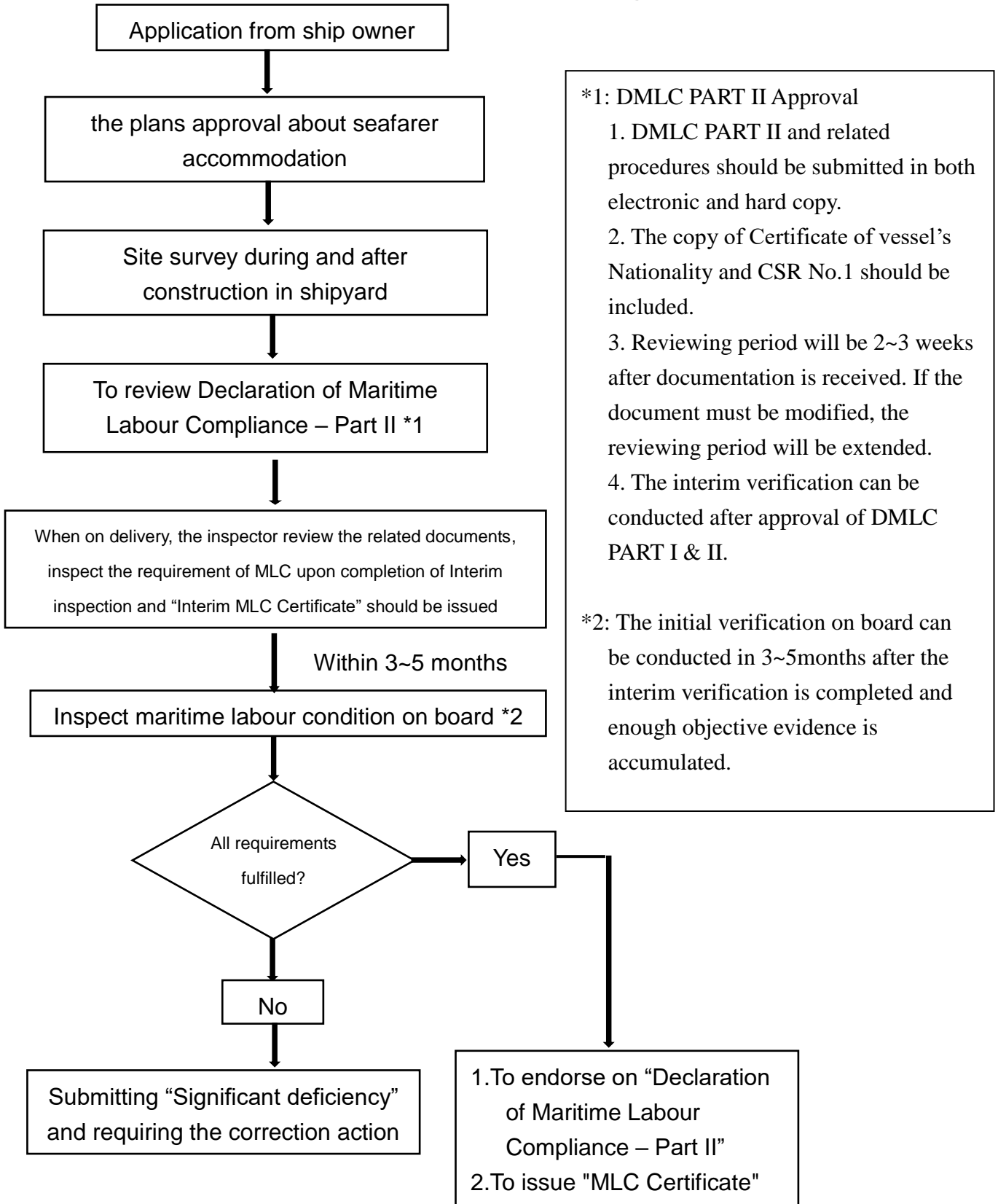
新建造船舶之初次檢查：



PROCEDURE FOR INSPECTION AND CERTIFICATION OF MLC

**MLCP – 1**

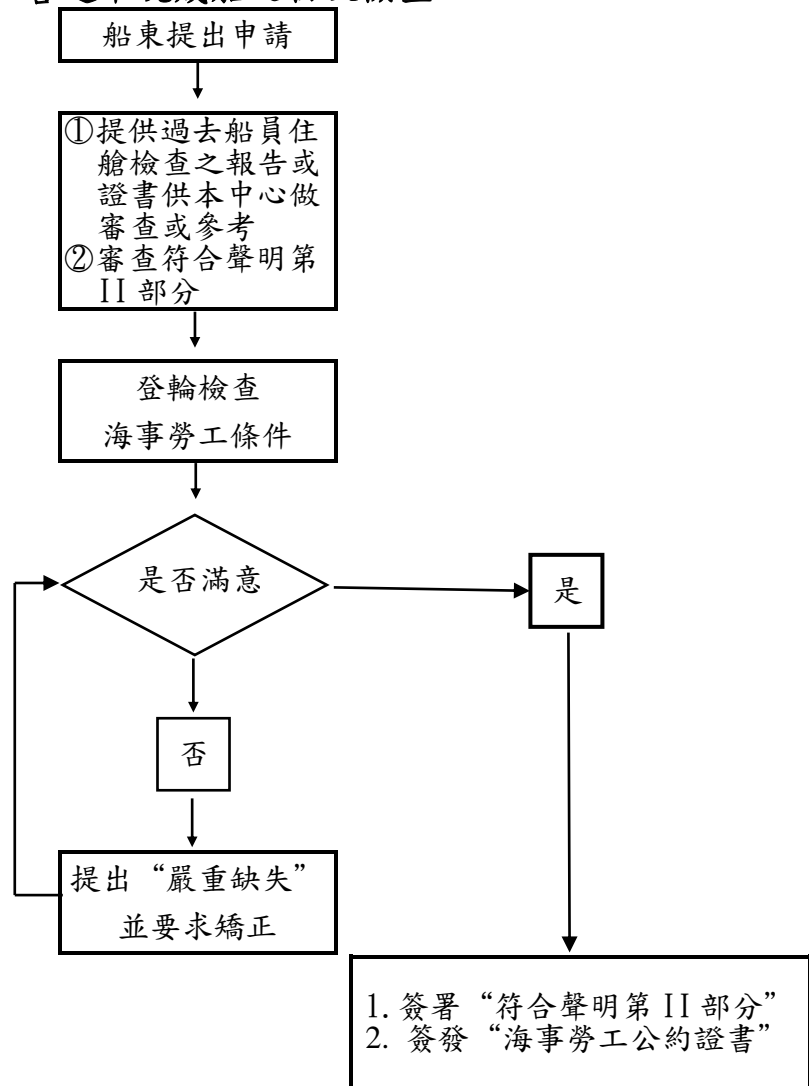
**Initial Inspection for the ship during construction:**



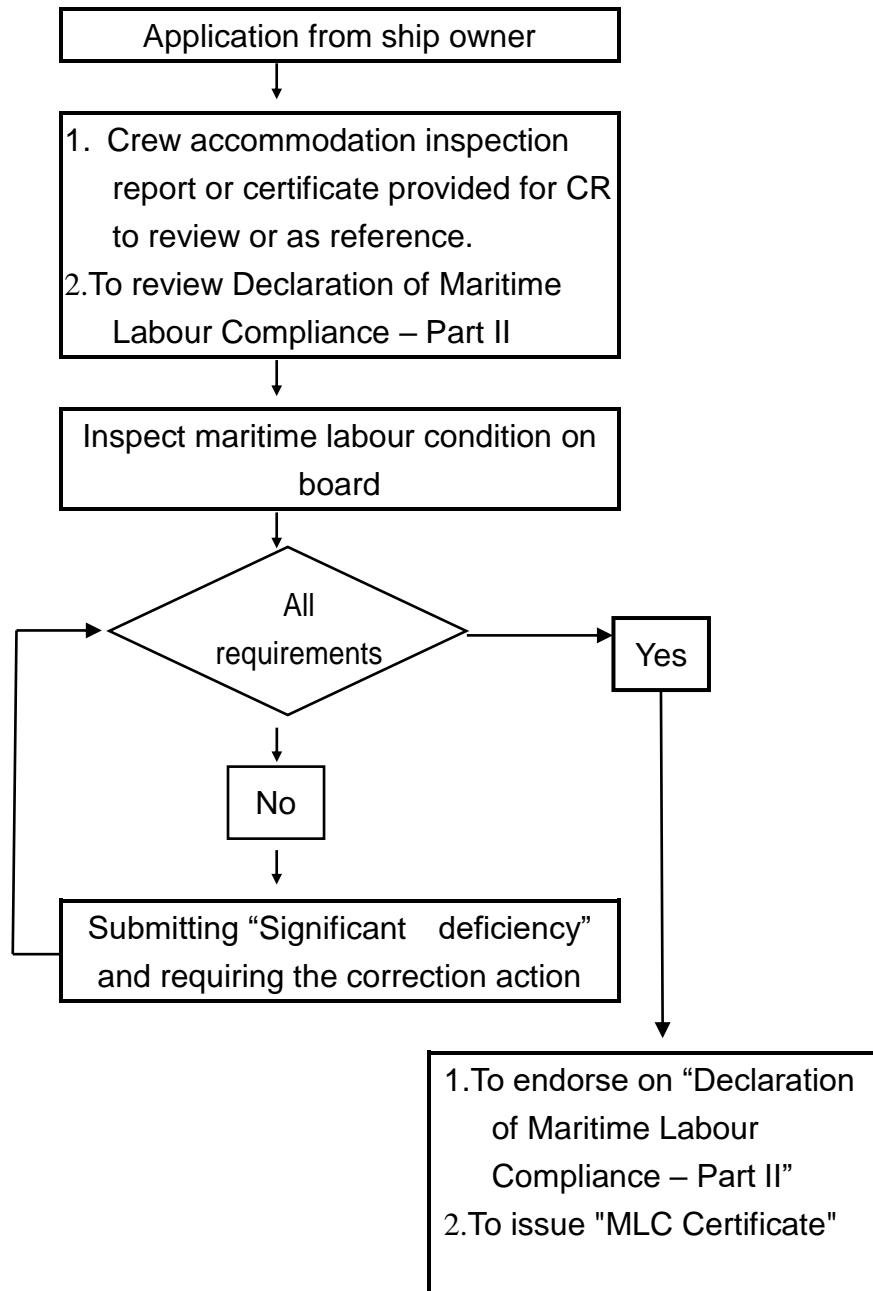


## MLCP-2

### 營運中現成船之初次檢查：

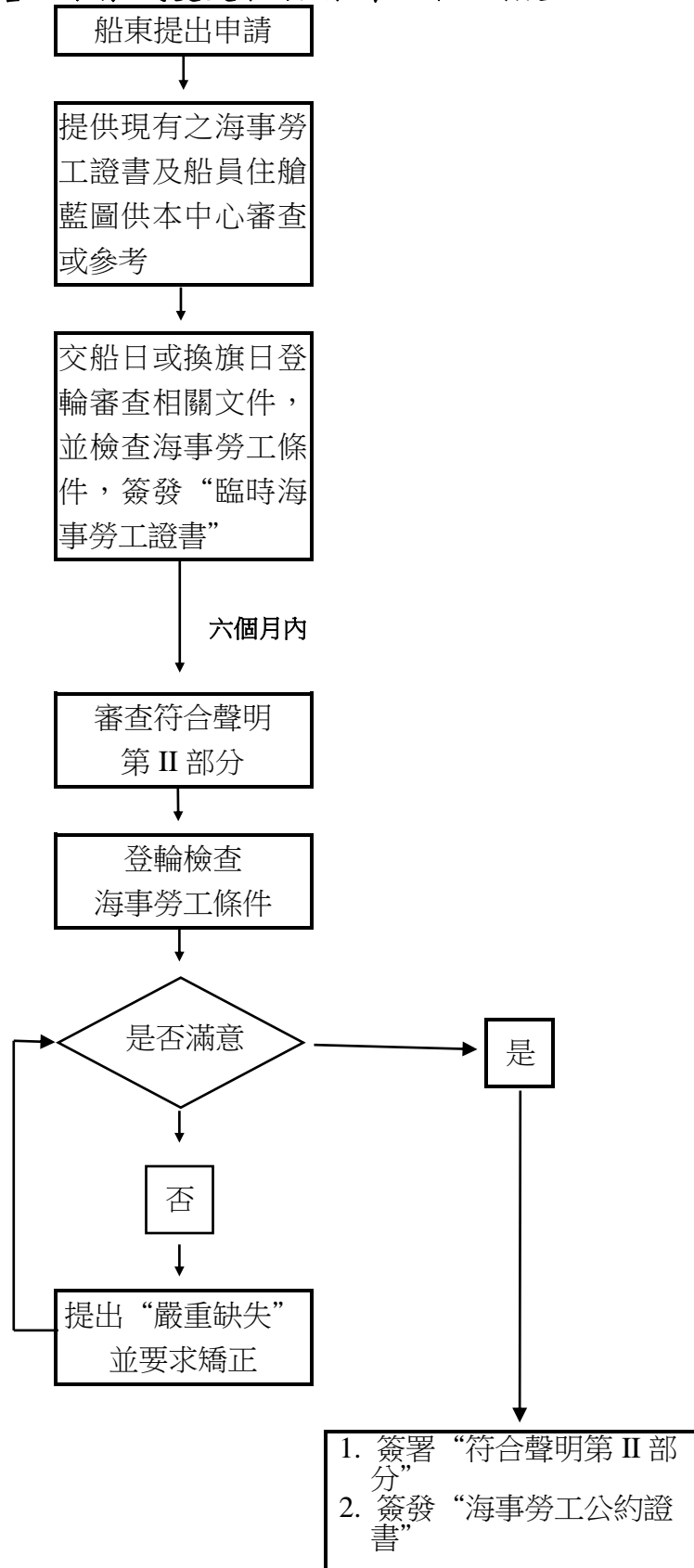


**MLCP - 2**  
**Initial Inspection for the Ship on Operation:**



### MLCP-3

新接手經營之船舶或變更船旗/船東之初次檢查：



**MLCP - 3**  
**Initial Inspection for the ship Changing Flag and /or Ship Owner:**

